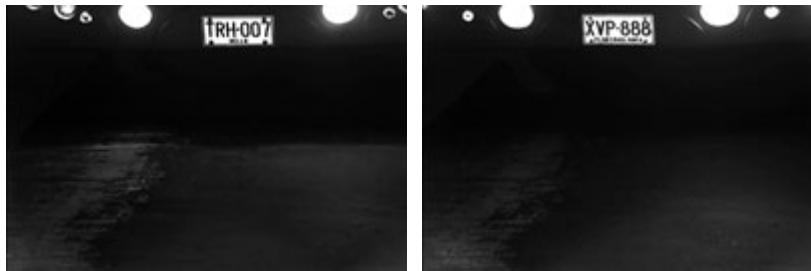


## GV-LPR CAM 20A ANPR Camera



### INTRODUCTION

The GV-LPR CAM gives a 570TVL high-contrast license plate recognition video to the GV-LPR software that identifies license plates. The camera features 24 high-efficient LEDs for an illumination range of 30 meters / 98.43 feet. The camera also features a weather-sealed IP66-compliant housing with the heater and blower inside.



### KEY FEATURES

- Built-in powerful IR LED illuminator
- Built-in always-on blower
- Weatherproof (IP66 standard)
- Sun-shield

### Specifications

Models		GV-LPR CAM 20M EIA DC 12V	GV-LPR CAM 20M CCIR DC 12V
<b>Camera</b>			
Sensor		1/3" B/W Exview CCD	
Resolution		570 TVL	
Video Standard		NTSC	PAL
Min. Illumination	Color	N/A	N/A
	B/W	N/A	N/A
	IR ON	0 Lux	0 Lux
Shutter Speed		Automatic, Fixed (1/60 ~ 1/100000; Deault 1/500)	
White Balance		AWB	
Image Setting		Brightness, Contrast, Saturation, Sharpness, Gamma, White Balance, Flicker-less, Image Orientation, Shutter Speed	
<b>IR LAMP</b>			
LED Quantity		24 High-efficient LEDs	
IR Distance		18 m / 59.06 ft (optimal) 20 ± 5m / 65.62 ± 16.40 ft	
Illumination View Angle		30°	
Illuminator Life		25,000 hrs	

<b>Lens</b>		
Focal Length		10 ~ 120 mm
Max. Aperture		1.6
Mount		CS Mount
Image Format		1/3"
Angle of view	Diagonal	33.7° ~ 2.8°
	Horizontal	27° ~ 2.3°
	Vertical	20.2° ~ 1.7°
Operation	Focus	manual
	Zoom	manual
	Iris	DC
<b>Mechanical</b>		
Lens Mounting		N/A
Connectors	Power	DC Jack
	Auto Iris	DC drive
	TV-Out	BNC
<b>General</b>		
Operating Temperature		Operation: -30 °C ~ 50 °C / -22 °F ~ 122 °F Storage: -30 °C ~ 70 °C / -22 °F ~ 158 °F
Heater		≤ 5 °C (ON), > 5 °C (OFF) ; 20W
Power Source		12V DC
Max. Power Consumption		30W (normal), 50W (heater on)
Dimensions (L x W x H)		425.01 x 155 x 156.75 mm / 16.73 x 6.10 x 6.17 in (with sun shield)
Weight		5 kg / 11.02 lb (with sun shield)
Construction		Robust aluminum with weatherproof sun shield
<b>Regulatory</b>		
Protection classification		IP66

**Note 1:** GV-LPR CAM 10A comes with free GV-LPR software, and the supplied GV-USB Dongle will need to be inserted to run the software. Since the free GV-LPR Software is a Trial Edition, it can only capture the license plate images and does not support the license plate recognition function. Therefore, the word "Capture" will be displayed in the license plate recognition results.

**Note 2:** All specifications are subject to change with notice.