

GV-Mobile Server

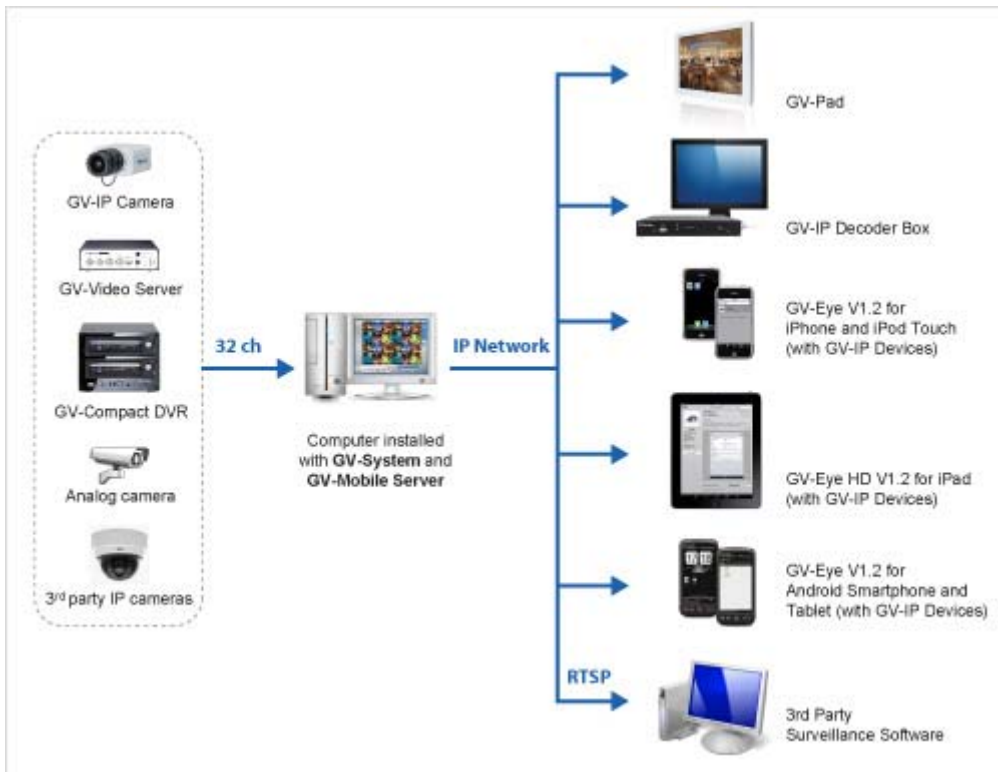


INTRODUCTION

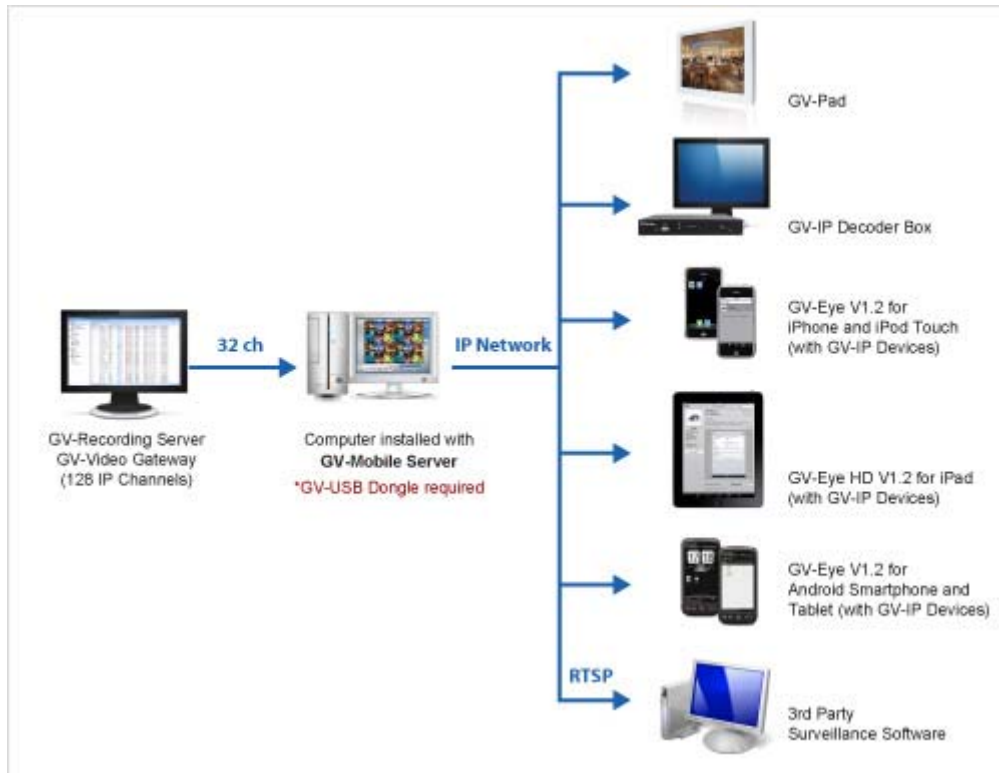
GV-Mobile Server is an application that can encode up to 32 video channels and subsequently allows for live view access from GV-IP Decoder Box, GV-Pad, and mobile devices including iPad, iPhone, iPod Touch and Android Smartphone. Third-party surveillance software can also access video channels from GV-Mobile Server through RTSP.

Through GV-Mobile Server, the clients can:

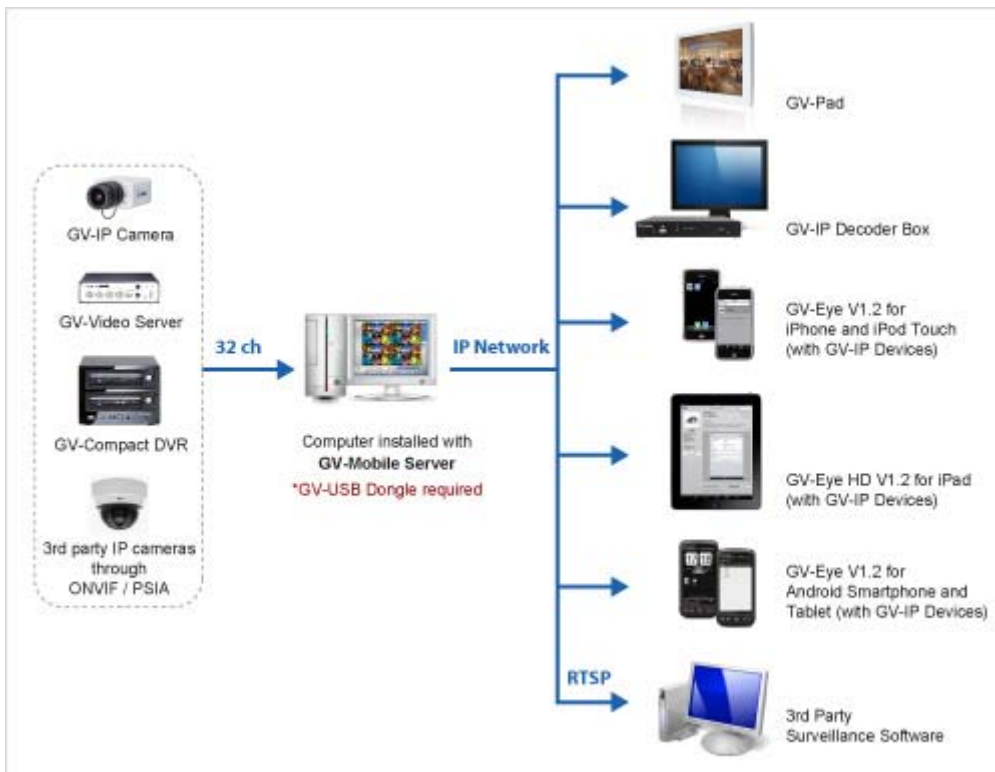
- access GeoVision and third-party channels connected to the GV-System.



- access GeoVision and third-party IP channels connected to GV-Video Gateway / GV-Recording Server



- directly access GeoVision and third-party IP devices



Features

- Live view access of analog cameras (connected to GV-System)
- Live view access of up to 4 user-selectable matrix channels
- Provides for dual streams
- Significantly reduces CPU loading and bandwidth usage of IP video devices
- User-configurable frame rate, quality, codec type and resolution for each camera stream

Requirements

Depending on the resolution, video compression format and the number of connected channels, **Standard Version** or **Advanced Version** requirements shall be met. The **GV-USB Dongle** is only required for connections with GV-Recording Server / GV-Video Gateway, third-party IP devices and GV-IP devices directly.

Standard Version

OS	32-bit	Windows 7 / Server 2008
	64-bit	Windows 7 / Server 2008 R2
CPU	Core i3 2120K, 3.3 GHz	
Memory	2 GB x 2	
Hard Disk	1 GB or more for installation	
Graphic Card	AGP or PCI-Express, 1024 x 768, 32-bit color	
DirectX	9.0c	
LAN	Gigabit Ethernet X 1	
Hardware	Internal or external GV-USB Dongle	

Advanced Version

	64-bit	Windows 7 / Server 2008 R2
CPU	Core i7 2600K, 3.4 GHz	
Memory	2 GB x 2	
Hard Disk	1 GB or more for installation	
Graphic Card	AGP or PCI-Express, 1024 x 768, 32-bit color	
DirectX	9.0c	
LAN	Gigabit Ethernet X 2	
Hardware	Internal or external GV-USB Dongle	

Note: The memory required may vary depending on the number of channels and resolution of videos received.

The Advanced Version is highly recommended in any of the following conditions:

Resolution	Codec	No. of Connected Channels
CIF	H.264	32
VGA	H.264	12 or more
D1	H.264	11 or more
1MP	H.264	5 or more
2MP	H.264	3 or more
3MP	H.264	3 or more
4MP	H.264	3 or more
5MP	H.264	6 or more

Note: These data may vary in different scenes (different data bitrates).

Specifications

Channels	
Maximum No. of Channels	32
Maximum No. of Matrix Views	4
Dual Stream Support	Yes
Live View Access	
From GeoVision IP devices	Yes (GV-IP Decoder Box and GV-Pad)
From third-party surveillance software	Yes (through RTSP)
From mobile devices	Yes <ul style="list-style-type: none"> • GV-Eye V1.2 or later for iPhone / iPod Touch / Android Smartphone and tablet • GV-Eye HD V1.2 or later for iPad
Using non-IE browsers	Yes (in MJPEG format)
General	
Language	Bulgarian / Czech / Danish / Dutch / English / French / German / Greek / Hebrew / Hungarian / Indonesian / Italian / Japanese / Lithuanian / Norwegian / Persian / Polish / Portuguese / Romanian / Russian / Serbian / Simplified Chinese / Slovakian / Slovenian / Spanish / Thai / Traditional Chinese / Turkish

Note: Specifications are subject to change without notice.

Compatible Device

The following software versions have been tested for compatibility with GV-Mobile Server V1.3:

- **GV-System V8.5.3** or later
- **GV-Recording Server** V1.1.0.0 or later
- **GV-Video Gateway** V1.1.0.0 or later
- **GV-IP devices V1.09** or later

Compatible Standard and Protocol

GV-Mobile Server also allows for integration with third-party IP video devices that are compatible with ONVIF (V2.0) and PSIA (V1.1) standards.

ONVIF	PSIA	RTSP	
--------------	-------------	-------------	--